



# 2005-06 ANNUAL SCHOOL REPORT SUPPLEMENT

## Region 06

## I.S. 14

### JHS 014 SHELL BANK

New York City Public Schools  
Joel I. Klein, Chancellor

Grade Levels:

Students on Oct. 31, 2005: 879

Students on May 1, 2006:

### School Mission Statement

*The mission of Intermediate School 14K is to create an academic environment where all students can achieve their greatest potential through individual learning styles. Administrators, teachers and parents will promote tolerance, harmony and self-esteem to prepare students to be productive members of our multicultural society. We are committed to using all resources available to meet educational standards and improve the academic performance of our children.*

### Principal's Statement

We have an excellent Center for Intellectually Gifted students (CIG) and a challenging Special Progress (SP) program, with accelerated courses in English, science, mathematics, and foreign language. Our magnet programs include legal studies, bio-medicine and Zenith. Our biomedical program has a link with Coney Island Hospital. Our Zenith Program includes a rich, accelerated academic program with an emphasis on technology. Gifted children are able to take Biology, Earth Science and Math A regents exams. Our youngsters are accepted to many specialized High School Programs.

### Special Academic Programs

Programs: SPE honors, Honors in second language skills; Regents Classes in Math A, Biology, Earth Science and Foreign Language. Magnet programs in science, Law and Technology; Peer Tutoring, extensive computer program, CTY Math, CIG program, Club program, and Journalism.

### Extracurricular Activities

Culture, computer and science clubs; basketball, football, karate, dance; formal peer mediation, Literary magazine, science newspaper. We are home to the Virtual Y which includes courses in chess, art, music, literacy, and math.

### Community Support

We have many partnerships, including: Arts Connection Corp., Brooklyn Performing Arts Council, Brooklyn College, Police Athletic League, Mentoring program, Virtual Y after school program, Sports and Arts Program, and Supreme Evaluation after school tutoring.

### Parent/School Support

Our parents association works collaboratively with our staff and actively participates in school leadership. They volunteer at all school activities -- e.g. trips, library, concerts. We also have Parent workshops through our guidance dept. Our parents play an active role on our school leadership team.

### 2006-07 School Accountability Status:

In Corrective Action

### This school received Title I Funding in:

2004-05: YES; 2005-06: YES; 2006-07: YES

The Division of Assessment and Accountability (DAA) compiled this report primarily from central databases and information provided by this school's principal. Throughout the report, N/A indicates that information was not available or did not apply to this school. The 2005-2006 Annual School Report is a supplement to the New York State Education Department's School Report Card for New York City Schools. Consult the Parent Guide for an explanation of the data in this report. Other DAA reports can be obtained online at [www.nyc.gov/daa](http://www.nyc.gov/daa).

# STUDENTS

## Involved In Police Department Incidents

The total enrollment in this consolidated location is 879 students. Please keep this number in mind as you review the numbers of incidents.

	This school	Consolidated Locations	Similar Size schools
<b>Major Crimes</b>			
Property Crimes	0		0.5
Crimes Against Persons	0		0.2
Other Crimes	3		3.0
Non- Criminal	0		5.0

Similar-Size Schools include all schools and consolidated locations with enrollments of 751-1000 students.

<http://schools.nyc.gov/ourschools/schoolsafety.htm>

## Recent Immigrants\*

Percent of enrollment	2004	2005	2006
This school	8.5	8.5	5.5
Similar schools			
City schools	9.1	8.1	6.3

\* Students enrolled as of Oct. 31, 2005 who immigrated to the U.S. within the last three years.

## Recent Immigrants' Place of Birth

Percent of students	2006
JAMAICA	0.6
TRINIDAD & TOBAGO	0.6
GUYANA	0.5

## Profile of Entering Ninth and Tenth Graders\*

Characteristics	This School	Similar Schools	City Schools
	Percent	Percent	Percent
Gender Male	N/A	N/A	N/A
Gender Female	N/A	N/A	N/A
Part-time Special Education	N/A	N/A	N/A
Full-time Special Education	N/A	N/A	N/A
ELL	N/A	N/A	N/A
Over-age for grade	N/A	N/A	N/A
Percent eligible for free lunch	N/A	N/A	N/A
Avg. daily attend. during prior sem.	N/A	N/A	N/A
Percent meeting standard in:			
ELA (tested only)	N/A	N/A	N/A
Mathematics (tested only)	N/A	N/A	N/A

\* This information is for the students who were on register as new 9th and 10th graders on October 31, 2005 and came from another school.

\* Not applicable to elementary and middle schools

## Admission to Other Schools in September 2005

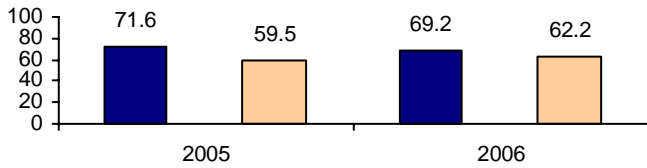
School Name	Boro	District	School Number	Leavers*	
				Number	Percent
SHEEPSHEAD BAY HIGH SCH	K	22	495	52	14.6
ABRAHAM LINCOLN HIGH SCH	K	21	410	36	10.1
MIDWOOD HIGH SCHOOL	K	22	405	26	7.3

\* Leavers are students who left their school for any reason.

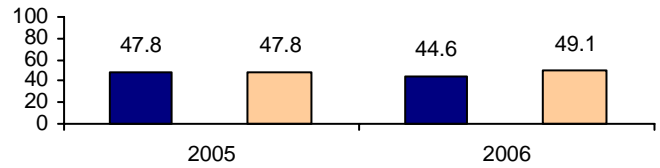
# SCHOOL CHARACTERISTICS

## TEACHERS

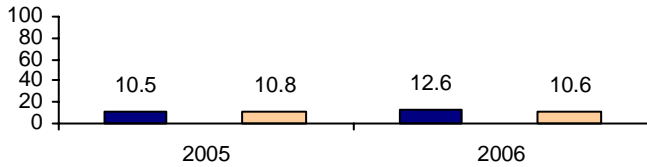
**Percent More Than Two Years Teaching in This School**



**Percent More Than Five Years Teaching Anywhere**



**Average Days Absent**



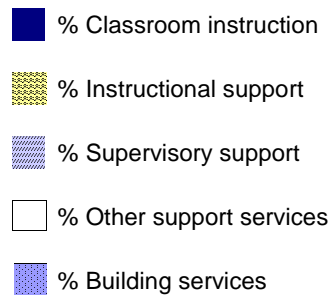
## SCHOOL EXPENDITURES

**Average Spending Per Student (Direct Services Only)**

	2004	2005	2006
This school			N/A
Similar schools			N/A
City schools	\$10,679	\$11,747	N/A

Note: The state calculation of school expenditures per student for direct and indirect services in 2004 was \$12,896 for all New York City schools. An average of \$13,085 was calculated for all New York State schools including those in New York City.

**How money was spent in this school in 2005 (Direct Services Only)**



% is used for District Support.

## OTHER SCHOOL INFORMATION

### School Capacity

Percent of utilization*	2004	2005	2006
This school	87.9	77.7	66.5
Similar schools			
City schools	85.8	82.4	79.9

\*When over 100%, school has exceeded official capacity.